



# GAT MONTHLY MEMBERSHIP PROGRESS REPORT

Results as of: 6/30/2023

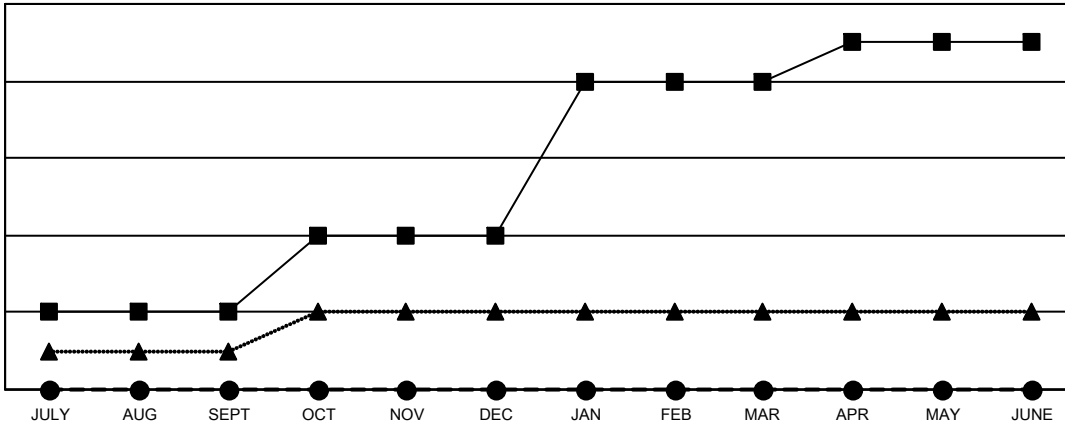
Multiple District 9

LOCATION: IOWA

Clubs			
RESULTS FOR 2022-2023			
QUARTER	NEW CLUB GOAL	NEW CLUBS	DROPPED CLUBS
JULY/AUG/SEPT	2	0	0
OCT/NOV/DEC	2	0	0
JAN/FEB/MAR	4	0	3
APR/MAY/JUNE	1	0	8

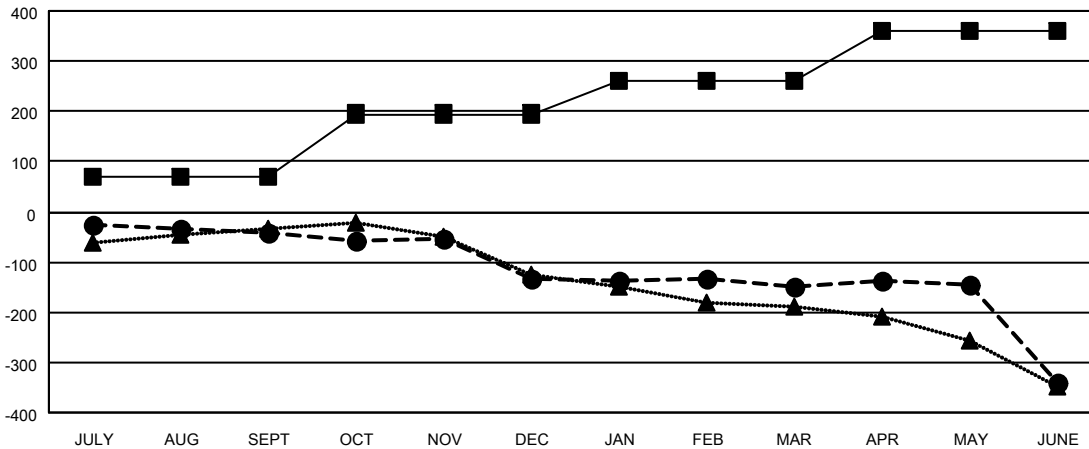
Members			
RESULTS FOR 2022-2023			
QUARTER	MEMBER GROWTH NET GOAL	MEMBER GROWTH ACTUAL	DROPPED MEMBERS ACTUAL (including transfers)
JULY/AUG/SEPT	70	141	169
OCT/NOV/DEC	125	134	214
JAN/FEB/MAR	65	161	151
APR/MAY/JUNE	100	151	325

GOALS AND ACTUAL NEW CLUBS CUMULATIVE



- CURRENT YEAR GOALS FOR NEW CLUBS
- CURRENT YEAR ACTUAL NEW CLUBS
- ▲- LAST YEAR ACTUAL NEW CLUBS

GOALS AND ACTUAL MEMBERS CUMULATIVE



- MEMBER GROWTH NET GOAL
- MEMBER GROWTH ACTUAL
- ▲- LAST YEAR MEMBERSHIP ACTUAL

DROPPED CLUBS: 11	
<b>DROPPED MEMBERS</b>	
DECEASED	122
CLUB CANCELLED	28
OTHER	709
<b>TOTAL</b>	<b>859</b>

157 CLUBS OF 284 ADDED 1 OR MORE NEW MEMBERS

[CLICK HERE FOR CUMULATIVE MEMBERSHIP DATA](#)

GENDER DISTRIBUTION	
MALE	4,697 (71.72%)
FEMALE	1,850 (28.25%)
NON BINARY	1 (0.02%)
PREFER NOT TO ANSWER	1 (0.02%)
<b>TOTAL FAMILY UNIT MEMBERS</b>	<b>1,393</b>
<b>FAMILY MEMBERS PAYING HALF DUES</b>	<b>709</b>